



**AERO 21-01 PC, AERO 26-01 PC, AERO 21-01 PC INOX, AERO 26-21 PC,  
AERO 21-21 PC, AERO 26-2L PC, AERO 21-21 PC INOX, AERO 31-21 PC  
INOX**

# **SERVICE MANUAL**

---

<b>Frontpage</b> .....	1
<b>Contents</b> .....	2
<b>A. Preface</b> .....	3
<b>B. Technical specifications</b> .....	4
Model: 21-01.....	4
Model: 21-21.....	5
Model: 26-01.....	6
Model: 26-21.....	7
Model: 26-2L.....	8
Model: 31-21.....	9
<b>C. Construction</b> .....	10
Overview of different motor heads.....	10
Overview of different containers.....	11
<b>D. Service</b> .....	12
1. Motor head.....	12
1.1 Overview of the motor head.....	12
1.2 Disassembling/assembling of the cover.....	12
2. Air guide plate.....	14
2.1 Overview and disassembly/assembly of the air guide plate.....	14
3. Bottom plate.....	17
3.1 Overview and disassembly/assembly of the bottom plate.....	17
4. Filter plate.....	18
4.1 Overview and disassembly/assembly of the filter plate.....	18
5. Container.....	20
5.1 Overview and disassembly/assembly of the container.....	20
6. Resettable fuse (AU/NZ).....	21
6.1 Description of power outlet fuse.....	21
<b>E. Tools</b> .....	22
<b>F. Wiring</b> .....	23
Model: 01.....	23
Model: NEO 2L.....	24
Model: NEO 2L (AU/NZ).....	25
Model: NEO 21.....	26
Model: NEO 21 (AU).....	27

## Preface

This repair manual contains a detailed description of the main repair work for wet and dry cleaners of the Nilfisk-ALTO AERO Series.

- \* Repair work requires a suitable testing workplace with the necessary power supply.
- \* If operating errors are evident, refer the customer to the operating instructions.
- \* A fault in the equipment can have a number of causes. Chapter "C" Troubleshooting will help you here.
- \* Refer to the illustrated spare parts lists during repairs. They show the assembly position and the sequence in which the individual components should be assembled.
- \* Always observe "Technical Service Bulletin" (TSB) sheets! They contain information on technical modifications made after publication of this repair manual.

TSB sheets are also valid as a supplement to the spare part list until publication of a new edition!

Repair manuals and technical information sheets should be available at the site where repairs are carried out. It is not permitted to give them to third parties.

**Use original Nilfisk-ALTO spare parts only!**

## Safety Instructions

For your own safety!



Before using the cleaner, always read the operating instructions and keep them readily available.

Only allow the vacuum cleaner to be used by persons who have been trained in its use and who have been explicitly authorized to use it.

**Repairs should only be made by someone who has received proper instructions for the job or who is a qualified electrician.**

**After the repair or modification an electrical examination is to be performed according to EN 62638**

Observe national safety directives and regulations for the electrical engineering trade, in particular:

IEC 60335-2-69  
EN 60335-2-69

DIN VDE 105 Part 1:  
Operation of power Installation.

EN 62638:  
Repairing, modifying and testing electrical installations.

Model / Type		AERO 21-01						
Country variants		EU	GB	GB	CH	US	JP	
	Voltage	V	220-240	110	230	220-240	120	
Electrical data	Frequency	Hz	50-60		50	60		
	Fusing	A	16		10	15		
	Power consumption PIEC	W	1000					
	Power Max	W	1200					
	Power cord length	m	5	7	5	8	5	
	Power cord type		H05 VV	H07BQ-F	H05 VV	AWG18		
	Protection class		II					
	Protection category		IPX4					
	Motor data	Numbers of motors		1				
		Vacuum	mbar	210				
Air volume flow		l/min	3600					
Sound pressure level at 1m, EN 60704-1		dB(A)	72					
Operating noise		dB(A)	64					
Dimensions and weight		Width	mm	377				
	Depth	mm	385					
	Hight	mm	506					
	Weight	kg	8					
	Tank volume	l	20					
	Container net filling - dry (without bag)	l	16					
	Container net filling (wet)	l	12					

Model / Type	AERO 21-21		
Country variants	EU	CH	
Electrical data	Voltage	V	220-240
	Frequency	Hz	50-60
	Fusing	A	16
	Power consumption PIEC	W	1000
	Power Max	W	1200
	Power cord length	m	5
	Power cord type		H05 VV
	Protection class		I
	Protection category		IPX4
Motor data	Numbers of motors		1
	Vacuum	mbar	210
	Air volume flow	l/min	3600
	Sound pressure level at 1m, EN 60704-1	dB(A)	72
	Operating noise	dB(A)	64
Dimensions and weight	Width	mm	390
	Depth	mm	395
	Hight	mm	525
	Weight	kg	8
	Tank volume	l	20
	Container net filling - dry (without bag)	l	16
	Container net filling (wet)	l	12

<b>Model / Type</b>			<b>AERO 26-01</b>
<b>Country variants</b>			EU
<b>Electrical data</b>	Voltage	V	220-240
	Frequency	Hz	50-60
	Fusing	A	16
	Power consumption PIEC	W	1000
	Power Max	W	1200
	Power cord lenght	m	5
	Power cord type		H05 VV
	Protection class		II
Protection category			IPX4
<b>Motor data</b>	Numbers of motors		1
	Vacuum	mbar	210
	Air volume flow	l/min	3600
	Sound pressure level at 1m, EN 60704-1	dB(A)	72
	Operating noise	dB(A)	64
<b>Dimensions and weight</b>	Width	mm	376
	Depth	mm	392
	Hight	mm	530
	Weight	kg	8
	Tank volume	l	25
	Container net filling - dry (without bag)	l	18,5
	Container net filling (wet)	l	16,2

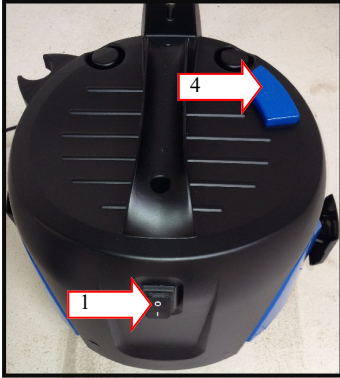
Model / Type		AERO 26-21						
Country variants		EU	GB	GB	FR	AU/NZ	US	
Electrical data	Voltage	V	220-240	110	230	220-240	120	
	Frequency	Hz	50-60					60
	Fusing	A	16					10
	Power consumption PIEC	W	1000					
	Power Max	W	1200					
	Power cord length	m	5	8	5	8	8	
	Power cord type		H05 VV	H07BQ-F	H05 VV			AWG16
	Protection class		I					
	Protection category		IPX4					
	Motor data	Numbers of motors		1				
Vacuum		mbar	210					
Air volume flow		l/min	3600					
Sound pressure level at 1m, EN 60704-1		dB(A)	72					
Operating noise		dB(A)	64					
Dimensions and weight	Width	mm	376					
	Depth	mm	392					
	Hight	mm	530					
	Weight	kg	8					
	Tank volume	l	25					
	Container net filling - dry (without bag)	l	18,5					
	Container net filling (wet)	l	16,2					

Model / Type	AERO 26-2L		
Country variants	EU	CH	
Electrical data	Voltage	V	220-240
	Frequency	Hz	50-60
	Fusing	A	16
	Power consumption PIEC	W	1200
	Power Max	W	1500
	Power cord length	m	5
	Power cord type		H05 VV
	Protection class		I
	Protection category		IPX4
Motor data	Numbers of motors		1
	Vacuum	mbar	235
	Air volume flow	l/min	3700
	Sound pressure level at 1m, EN 60704-1	dB(A)	67
	Operating noise	dB(A)	63
			64
Dimensions and weight	Width	mm	376
	Depth	mm	392
	Hight	mm	530
	Weight	kg	9
	Tank volume	l	25
	Container net filling - dry (without bag)	l	18,5
	Container net filling (wet)	l	16,2

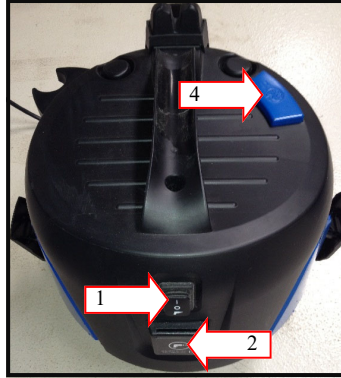


Model / Type	AERO 31-21			
Country variants	EU	CH	US	
Electrical data	Voltage	V	220-240	120
	Frequency	Hz	50-60	50
	Fusing	A	16	10
	Power consumption PIEC	W	1000	
	Power Max	W	1200	
	Power cord length	m	5	8
	Power cord type		H05VV	AWG16
	Protection class		I	
Protection category		IPX4		
Motor data	Numbers of motors		1	
	Vacuum	mbar	210	
	Air volume flow	l/min	3600	
	Sound pressure level at 1m, EN 60704-1	dB(A)	72	
	Operating noise	dB(A)	64	
Dimensions and weight	Width	mm	392	
	Depth	mm	395	
	Hight	mm	635	
	Weight	kg	10	
	Tank volume	l	30	
	Container net filling - dry (without bag)	l	24	
	Container net filling (wet)	l	22	

## Overview of different types of motor heads



21-01



21-21

1. On/ off
2. Tool socket
3. Variable speed
4. Filter cleaning
5. Cable rewind
6. Resettable fuse (5 amp.)



26-01



26-21 / 31-21



26-2L



Aero for AU/NZ with resettable fuse

## Overview of different types of containers



Standard - 21L



Standard - 26L

- 1. Inlet
- 2. Castor wheels



INOX - 21L



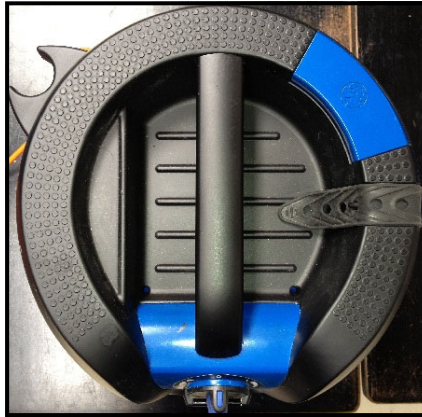
INOX - 31L

## 1. Motor head

### 1.1 Overview of the motor head



21-01, 21-21



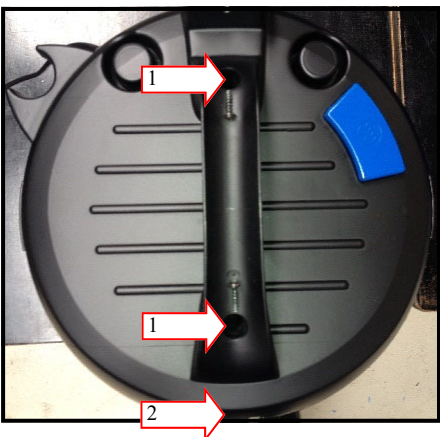
26-01, 26-21, 31-21, 26-2L

#### Description:

This is a general overview of how the motor heads will look\* like from the above.

\* Please expect some minor difference between the models.

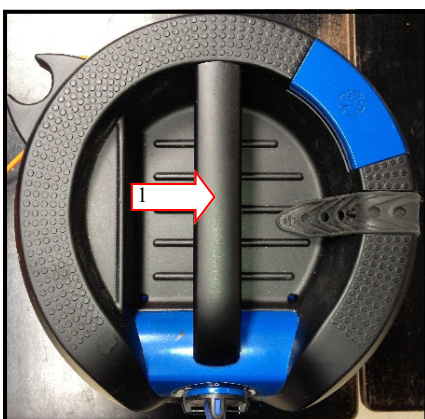
### 1.2 Disassembling/assembling of the cover



21-01, 21-21

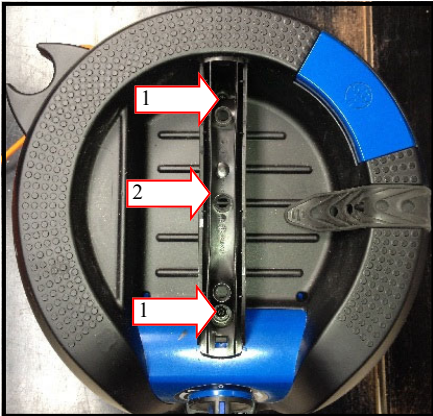
1. Position of screws
2. Pull gently outwards in the black plastic, just over the inlet

Lift gently in the cover.



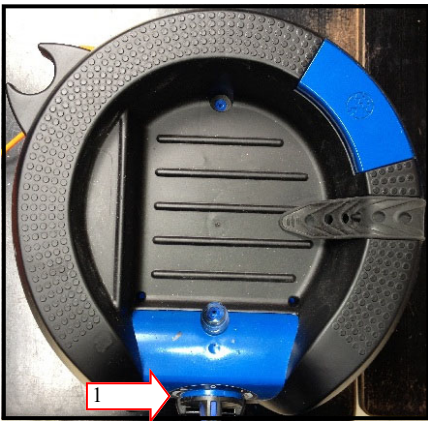
26-01, 26-21, 31-21, 26-2L

1. Lift the cover of the handle



26-01, 26-21, 31-21, 26-2L

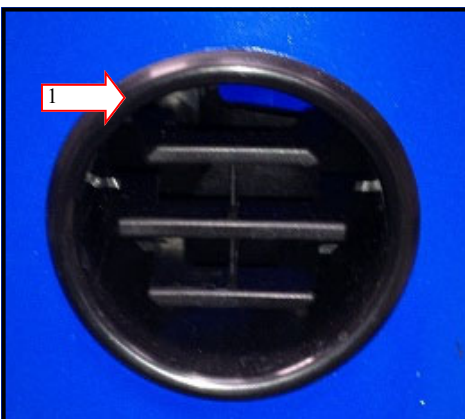
1. Position of screws
2. Remove the handle



26-01, 26-21, 31-21, 26-2L

1. Pull gently outward in the black plastic, just over the inlet

Lift gently in the cover.



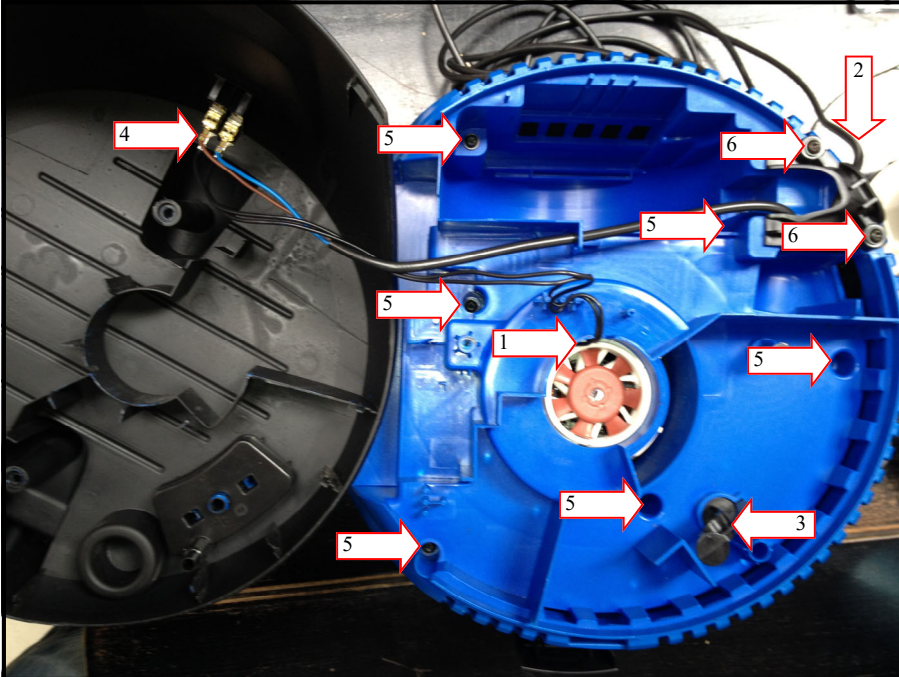
ALL

1. Pull gently outward in the blow-out plastic.

Please ensure the blow-out hole is clear before removing the air guide plate.

## 2. Air guide plate

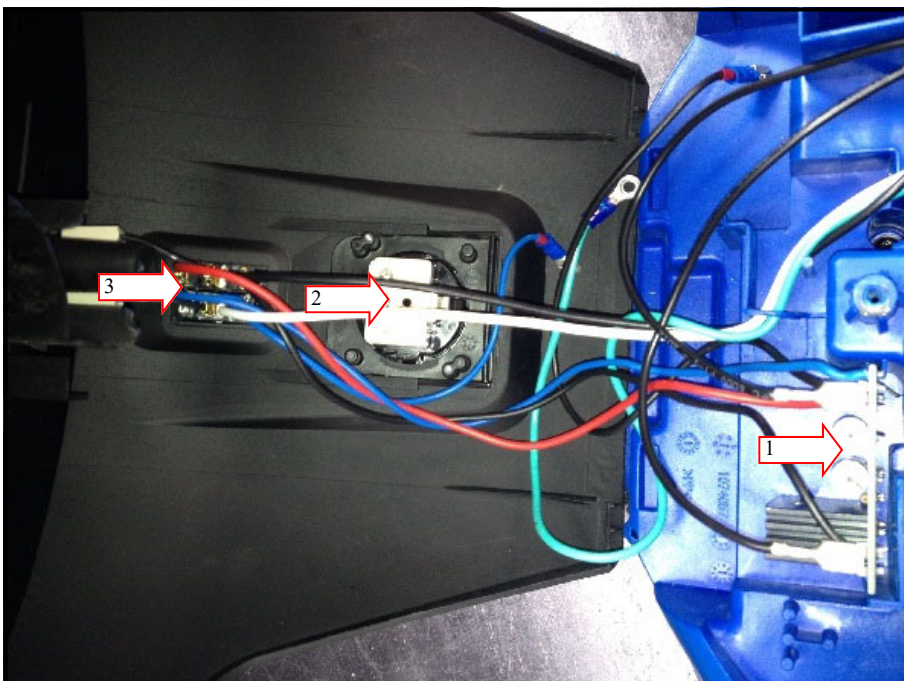
### 2.1 Overview and disassembly/assembly of the air guide plate



21-01 PC, 21-01 PC INOX

1. Wire to motor unit
2. Wire for input
3. Push & Clean extender arm
4. Switch
5. Position for screws
6. Screws for cable relief

Do NOT use this picture as an electrical connection guide.



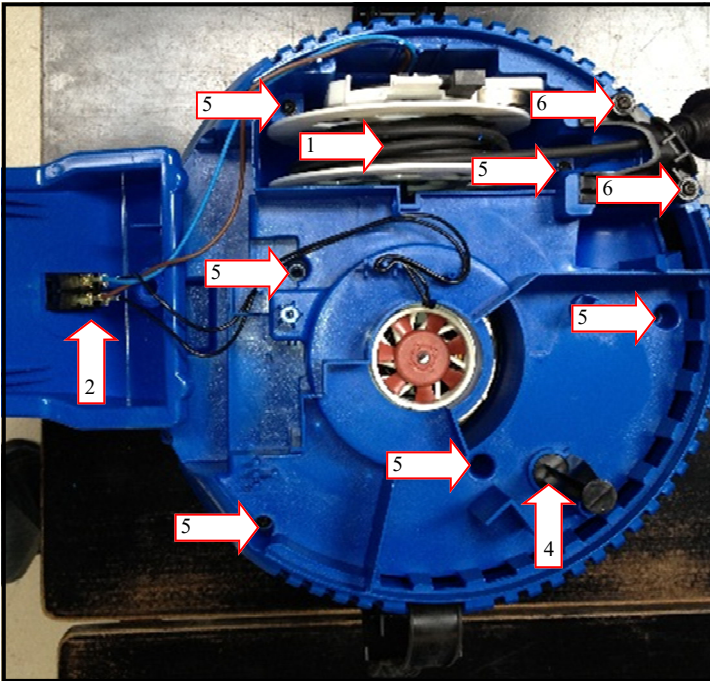
21-21 PC, 21-21 PC INOX

Please refer to the picture above for overview.

1. Circuit board
2. Tool socket
3. Switch

Do NOT use this picture as an electrical connection guide.

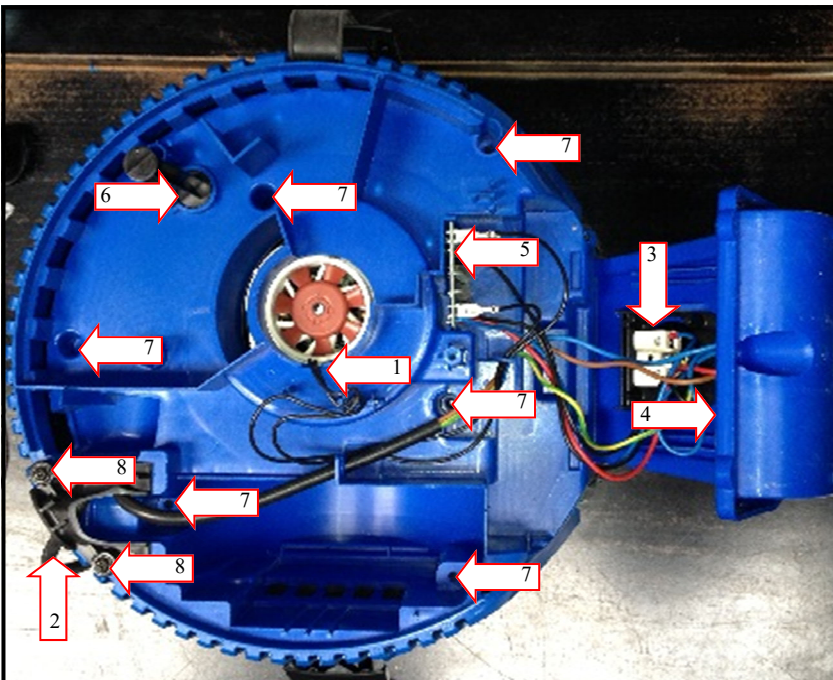
Models: 26-01 PC X, 26-21 PC, 31-21 PC INOX



26-01 PC X

1. Cable rewinder
2. Switch
3. Wire to motor unit
4. Push & Clean extender arm
5. Position of screws
6. Screws for cable relief

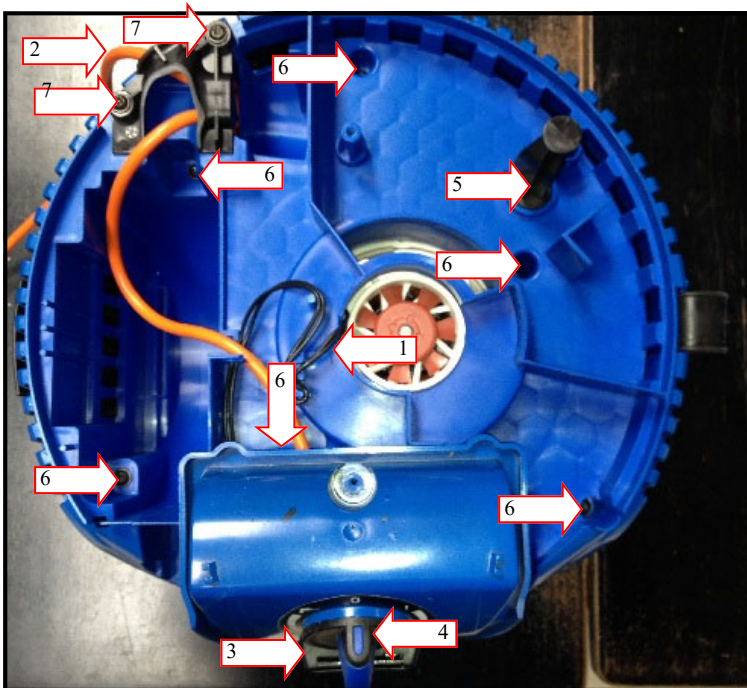
Do NOT use this picture as an electrical connection guide.



26-21 PC, 31-21 PC INOX

1. Wire to motor unit
2. Wire for input
3. Tool socket
4. Switch
5. Circuit board
6. Push & Clean extender arm
7. Positions of screws
8. Screws for cable relief

Do NOT use this picture as an electrical connection guide.

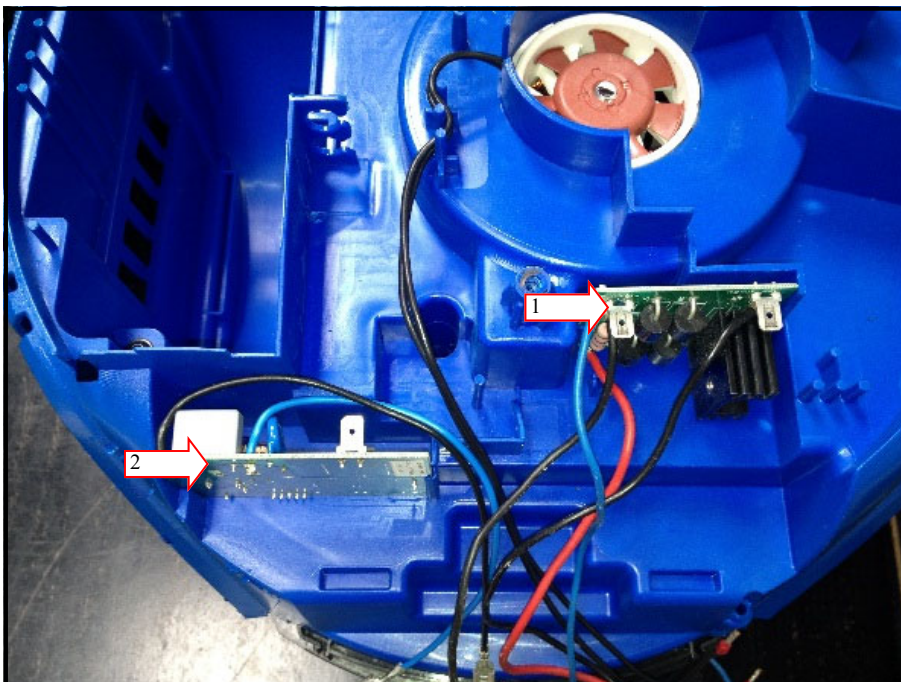


26-2L PC

Picture 1 of 2

1. Wire to motor unit
2. Wire for input
3. Tool socket
4. Adjustable switch
5. Push & Clean extender arm
6. Position of screws
7. Screws for cable relief

Do NOT use this picture as an electrical connection guide.



21-21 PC, 21-21 PC INOX, 26-21 PC, 26-2L PC, 31-21 PC INOX

Picture 2 of 2

This picture is only meant to show the position for the different types of circuit boards.

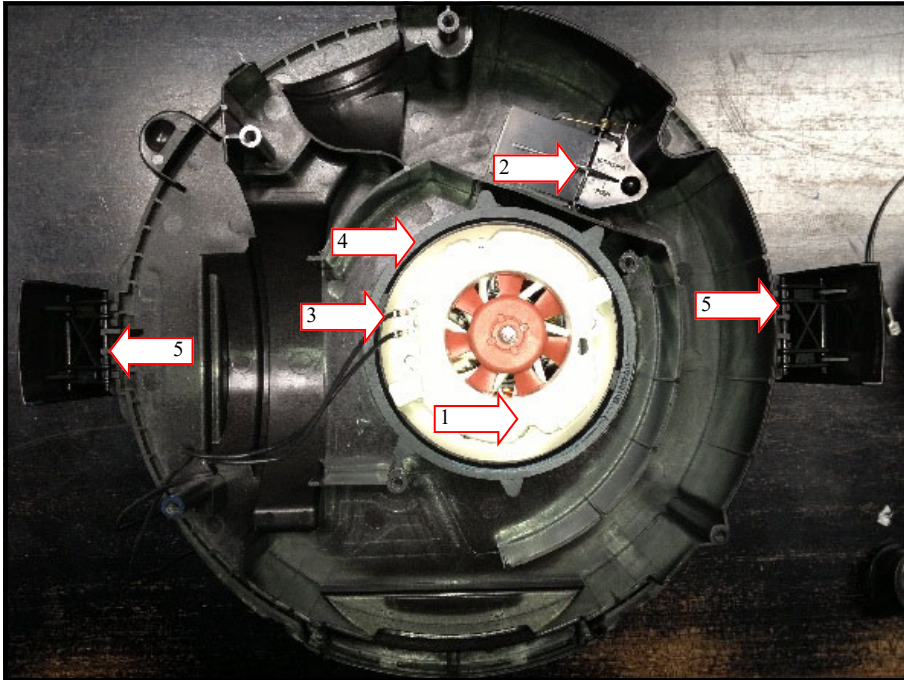
1. Circuit board for normal switch and tool socket
2. Circuit board for adjustable switch and tool socket

Do NOT use this picture as an electrical connection guide.



## 3. Bottom plate

### 3.1 Overview and disassembly/assembly of the bottom plate



1. Motor unit
2. Push & Clean system
3. Motor unit wires
4. Gaskets
5. Container locks

Do NOT use this picture as an electrical connection guide.

All

## 4. Filter plate

### 4.1 Overview and disassembly/assembly of the filter plate



All

1. Filter tension

Rotate and lift to remove.



All

1. Filter
2. Deflector plate
3. Hole for airflow

Remove filter



1. Filter gasket

All

## 5. Container

### 5.1 Overview and disassembly/assembly of the container



All

1. Castor wheels  
Pull to remove.
2. Back wheels  
Squeeze the inner part to remove



Pos. 1 Resettable fuse  
Pos. 2 Socket outlet

Aero for AU/NZ with resettable fuse

An external power tool can be connected to the socket outlet. The socket has a 5 Amp thermal fuse to protect the machine against overload.

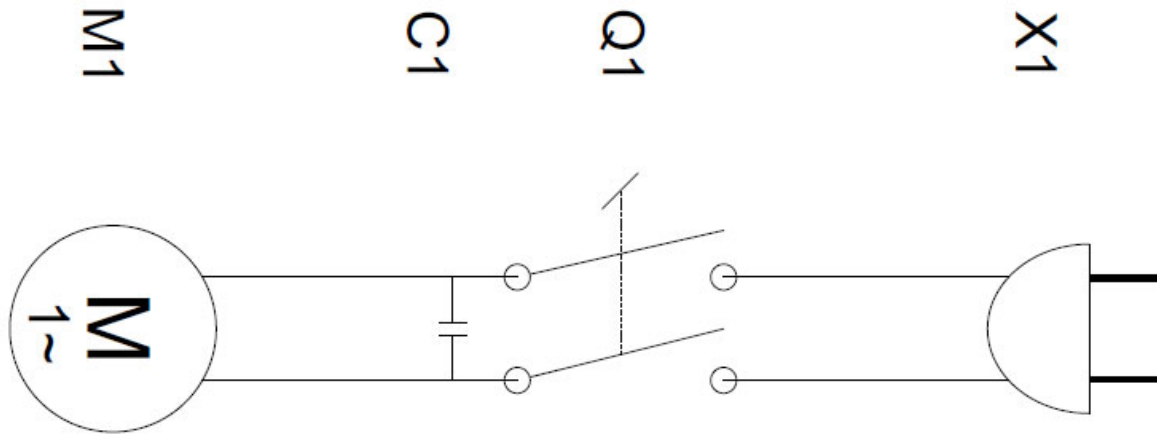
If the power consumption gets too high the thermal fuse activates and cut off the power on the socket outlet.

The thermal fuse can be deactivated again by pressing the knob.

The maximum power consumption of the connected power tool is stated in the section "Specifications" in the user manual.



Torx screw driver T25  
Torx screw driver T10  
Hobby knife or similar  
Cable cutter for solid cables



- C1 Filtering capacitor X2
- M1 Motor turbine
- Q1 Rotary switch
- X1 Power cord

